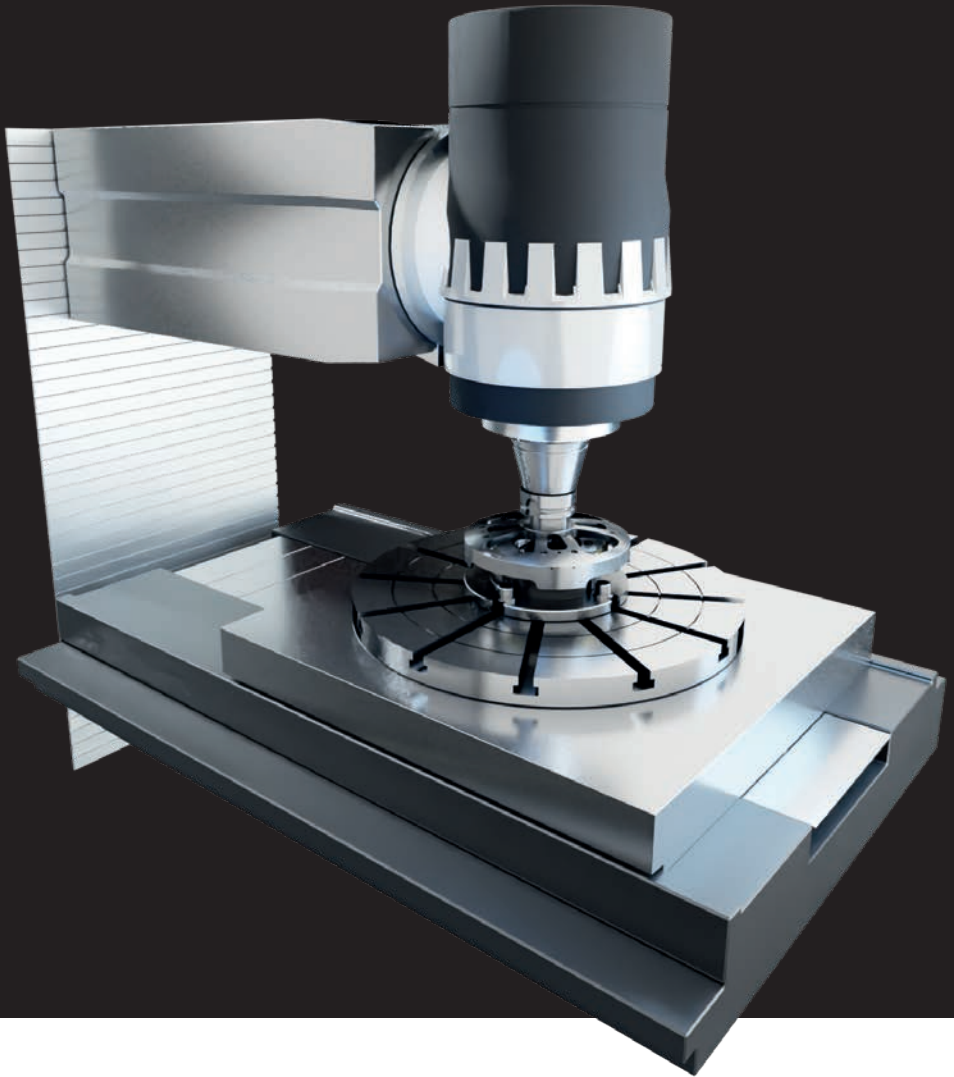


# HEIDENHAIN



## **Machine Calibration**

Fast, simple, accurate

[www.heidenhain.com](http://www.heidenhain.com)

# Machine calibration with comparator systems from HEIDENHAIN, for optimal machining results

## Fast

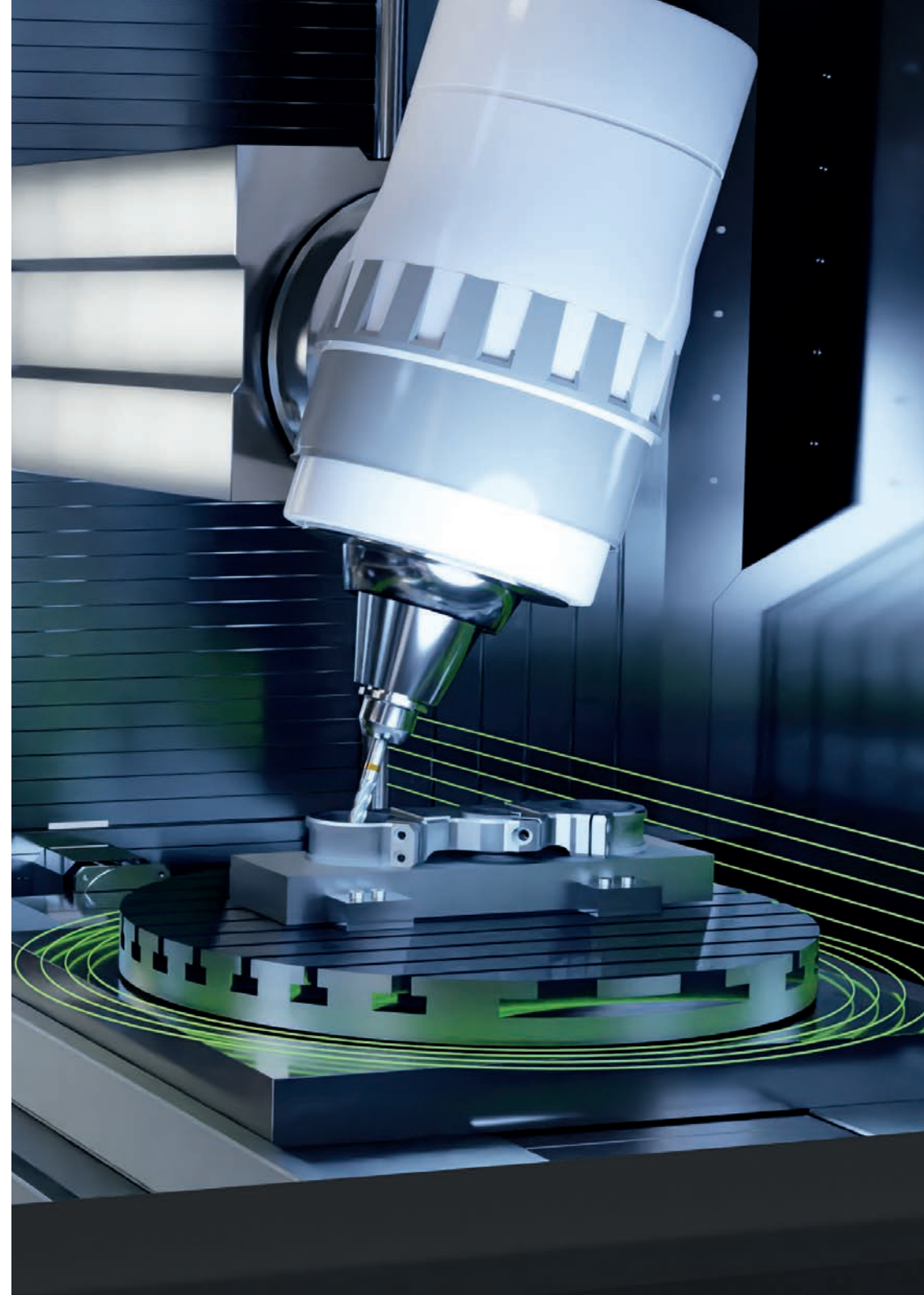
- Wide mounting tolerances
- Ready at all times
- Compact and easy to handle

## Simple and robust

- Developed specifically for machine tools
- Wear-free
- Intuitive software

## Highly accurate

- Superb system accuracy
- Stable accuracy, almost completely unaffected by surrounding conditions
- Contact-free measurement



## Comparator system for rotary tables



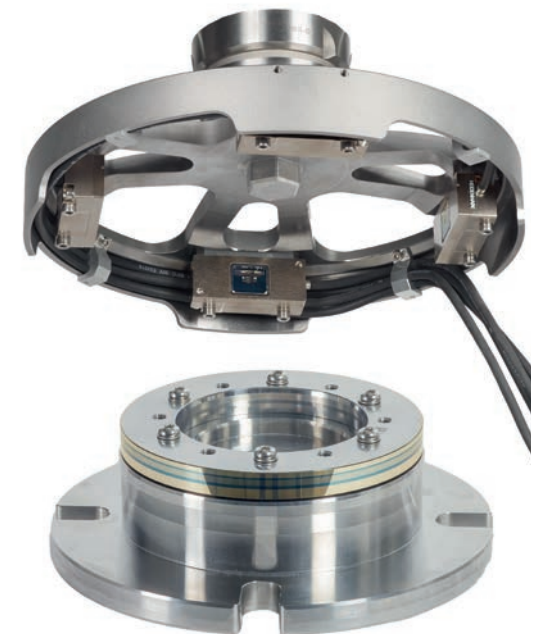
### RVM 4180

#### Specifications:


- System accuracy:  $\pm 0.5''$
- Measuring range:  $360^\circ$
- Measuring step:  $\geq 0.03''$
- Traversing speed:  $\leq 100$  rpm

#### Area of application:

- Testing the static positioning accuracy in accordance with ISO 230-2, -3 and VDI/DGQ 3441







Space-optimized comparator measuring system for tilting axes

## RVM 4280

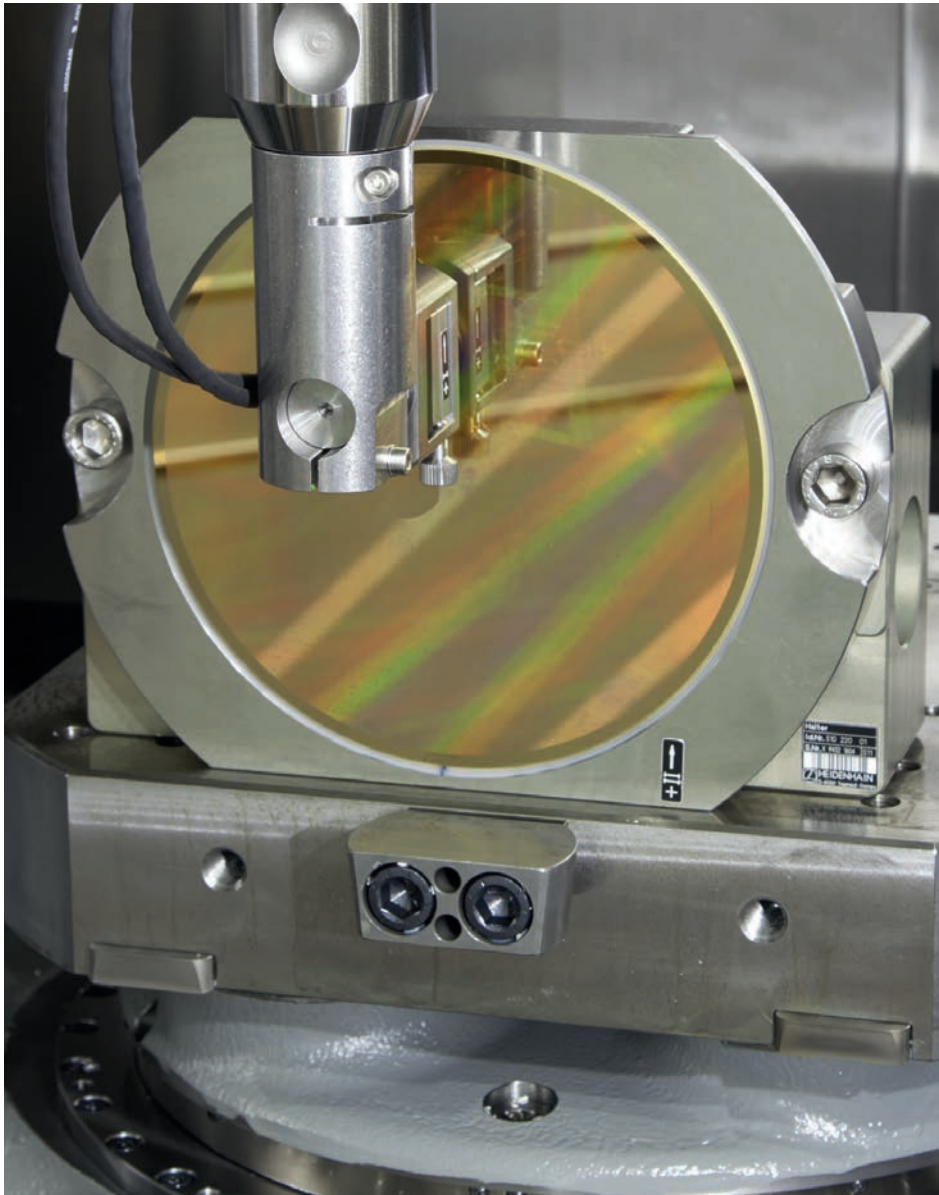
### Specifications:

- System accuracy:  $\pm 1.0''$
- Measuring range:  $360^\circ$
- Measuring step:  $\geq 0.03''$
- Traversing speed:  $\leq 100$  rpm

### Characteristics:

- Space-optimized variant for calibrating tilting axes and other difficult-to-reach rotary axes
- Software-supported mounting design

## Comparator measuring system for linear axes



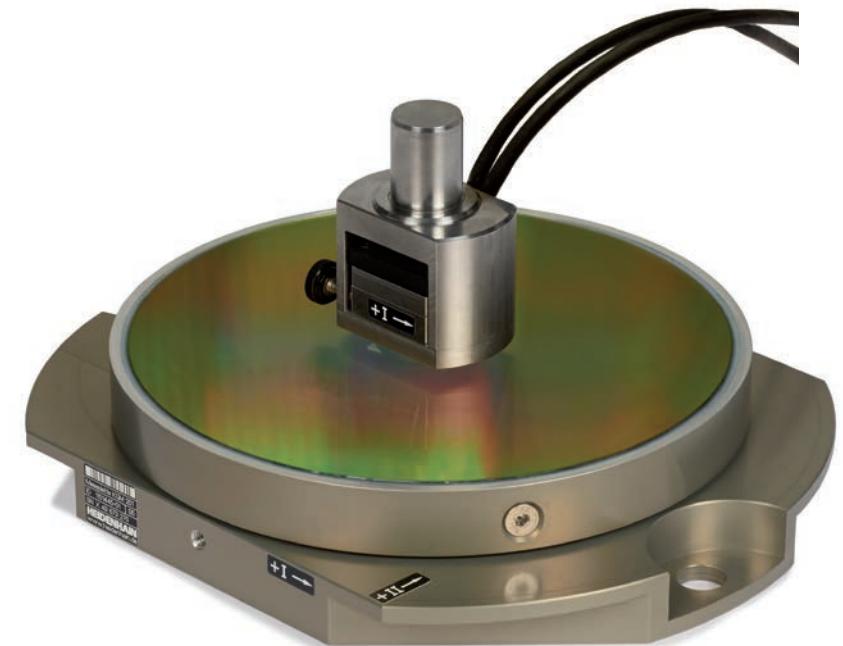
## KGM 281 und KGM 282

### Specifications:

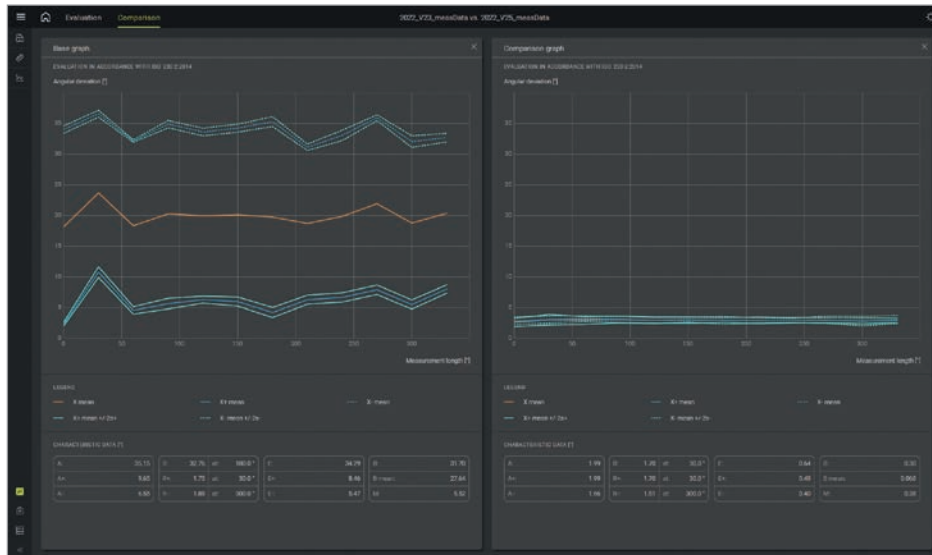
- Accuracy grade:  $\pm 1.0 \mu\text{m}$
- Measuring range:  $\leq 230 \text{ mm}$
- Measuring step:  $\geq 0.001 \mu\text{m}$
- Traversing speed: 72 m/min

### Area of application:

- Circularity testing in accordance with ISO 230-4
- Free-form testing (2D contours)
- Acceptance testing in accordance with 10791-6 K2/K3
- Testing the static positioning accuracy in accordance with ISO 230-2, -3 and VDI/DGQ 3441



# PC software for machine calibration



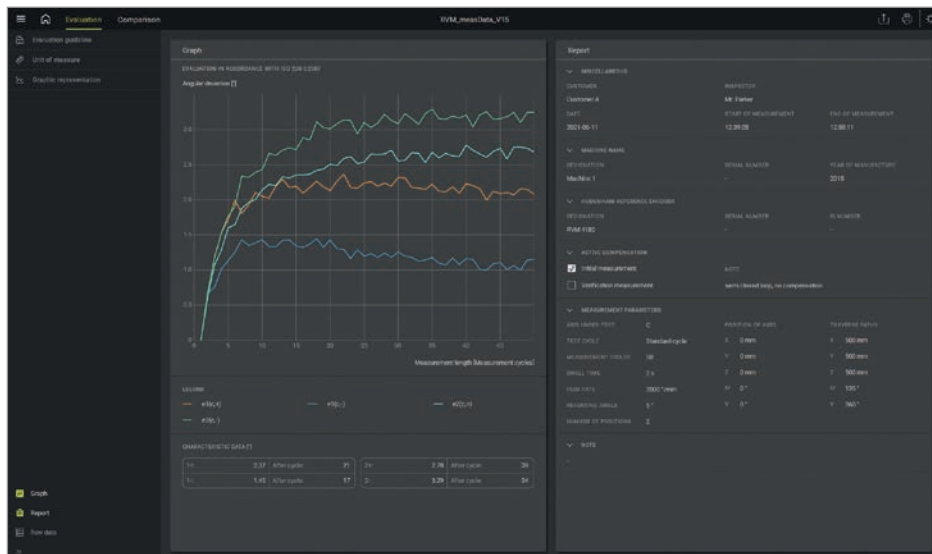
## ACCOM 4.0

### Characteristics:

- Add-on to hardware for a system solution
- Intuitive operation
- Separate measurement and evaluation functions
- Ability to export calibration charts and NC compensation tables

### Area of application:

- Acceptance testing with the RVM 4x80
- Acceptance testing with the KGM 28x; replacement of ACCOM 3.2 (in progress)
- Continuously improved functionality





# For more information



[www.heidenhain.com/RVM4000](http://www.heidenhain.com/RVM4000)



[www.heidenhain.com/KGM200](http://www.heidenhain.com/KGM200)

## HEIDENHAIN

**DR. JOHANNES HEIDENHAIN GmbH**

Dr.-Johannes-Heidenhain-Straße 5

**83301 Traunreut, Germany**

☎ +49 8669 31-5000

☎ +49 8669 32-5061

E-mail: [info@heidenhain.de](mailto:info@heidenhain.de)

[www.heidenhain.com](http://www.heidenhain.com)



**HEIDENHAIN**  
worldwide